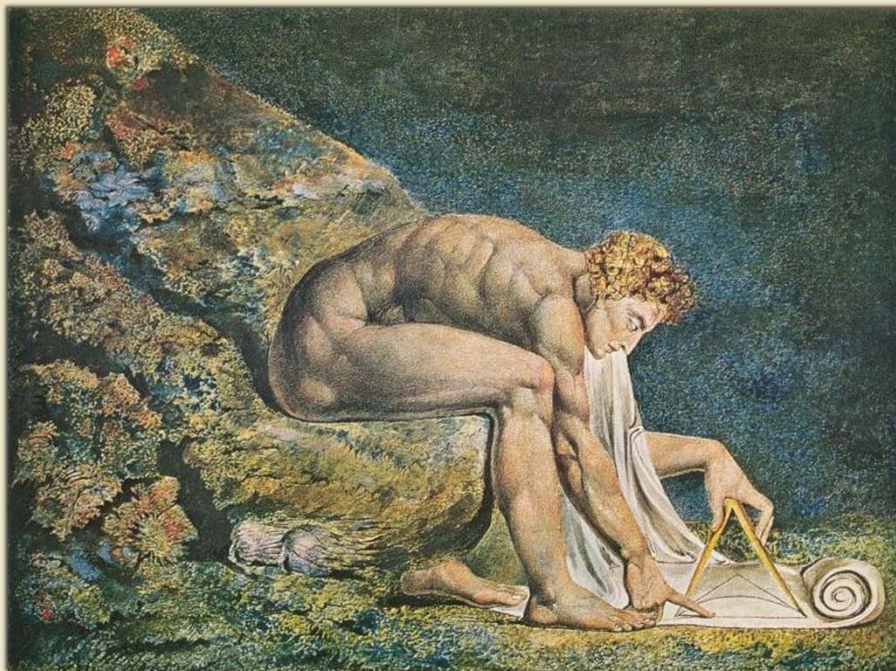


THE ASTROLOGICAL ASSOCIATION OF GREAT BRITAIN

CONFERENCE 2007

Applying Our Astrological Crafts



39th ANNUAL CONFERENCE
7th - 9th September 2007

SOUVENIR PROGRAMME

CONFERENCE SPEAKERS AND TALKS

Nick Campion and Prudence Jones

Nick Campion is Director of the innovatory MA in Cultural Astronomy and Astrology at the University of Wales at Lampeter (formally at Bath Spa University). He is also on the Faculty of Kepler College in the USA, where he lectures on both the BA and MA programmes. His two-volume history of astrology (Vol. 1 *The Dawn of Astrology* and Vol. 2 *The Golden Age of Astrology*) will be published by Continuum in 2008. His chief interest is how and why the sky became a path to knowledge, inspiration and salvation.

Prudence Jones is an astrologer, author and researcher based in Cambridge. She has written on ancient and medieval astrology, sacred city layout and the astronomical orientation of sites, in addition to pioneering modern experiential astrology. Her books, *Creative Astrology* and *A History of Pagan Europe* (with Nigel Pennick), are currently in print.

Masterclass:

The Glittering Spires

Enjoy a two-hour guided tour through some of the historic sites of Cambridge, one of the world's oldest university towns, accompanied by Nick Campion and Prudence Jones. We will start at the Round Church, built by the Knights Templar in the Middle Ages, and walk through some of the Colleges, concluding at Queens', with its astronomical sundial and 'mathematical bridge' built by Isaac Newton. Then join us for lunch at the riverside Anchor pub. The price includes an official tour guide, College entrance – including King's College Chapel – and transport to and from the conference site at Wyboston Lakes.

Claire Chandler

Claire Chandler has been the President of the Astrological Lodge of London since 2002 and a former editor of its publication, *Astrology Quarterly*. She has written many articles on a variety of topics and currently writes a mundane astrology column for *Astrology Quarterly*. An active member of the UK astrological community, Claire has spoken at many astrology groups and at the Astrological Association of Great Britain conference. She is particularly interested in mundane astrology and astrological symbolism. She is also the secretary of the APAE. Her website can be found at www.clairechandler.com

Forecasting the Year: Judging the Climate of the Year Ahead

How to pull together the major astrological events over a year or any period of time.

Using 2008 as an example we'll work through the factors which gives us the flavour of a period of time, not forgetting to link them into events which we know are coming up.

Unlocking the Secrets of Eclipses

Eclipses have always fascinated astrologers. In this session we will explore some of the lesser known factors including localising an eclipse, timing the outcome, integrating them into other long term cycles and will look at how we can locate these effects on Earth.

Bernard Eccles

Bernard Eccles has been going around in astrological circles for nearly thirty years. At the Astrological Lodge, he has frequently played the role of Jupiter, though to the AA he is merely a periodic comet, while in the media he is a small but still twinkling star. Long accustomed to having people wrongly guess his sun sign and misinterpret his Mercurial character, he continues to navigate by the stars when lost, and to tell time and season by the sun and moon. He has a hand-wound watch.

No Birthtime? No Problem!

Alternative strategies for coping with the difficult customer – or the person whose chart seems to make no sense when subjected to the usual transits and progressions.

Re-examining Primary Progressions

Mathematically problematical and ignored for many years – should we let primary progressions lie in the dust of history, or do they have a surprisingly modern message?

After-dinner talk

Fortune-telling: the Profession we Hate to Admit to

It's what people expect of us, so why don't we give them what they want? Not sure? Daren't? Here's how.

Darrellyn Gunzburg

Darrellyn Gunzburg is a professional consulting and teaching astrologer who lives in Bristol. Her publications include *Under Capricorn: an Anthology of Australian Astrology* (1990), *Life After Grief: An Astrological Guide to Dealing with Loss* (2004) and co-author of *The Visual Astrology Newsletter*. Her current work *On Reading Charts* is to be published by The Wessex Astrologer in 2008. Darrellyn holds a BA (Hons) from the Open University, majoring in the art historical exploration of religious art produced in Italy between 1280 and 1500, and is about to read for her Masters in art history. You can contact her at: www.AstroLogos.co.uk or www.darrellyngunzburg.com

Masterclass:

Written by the Chart: a Different Look at Your Chart Through Your Handwriting

Handwriting as a means of communication tells us far more than just the myriad of marks on a page. They directly reflect the aspects in a natal chart and, as such, give clients a concrete tool for awareness of their issues, along with the ability to understand them every time they pick up a pen.

Conference talk:

Unfolding Stories: a Way of Approaching the Themes and Issues of the Natal Chart

This lecture focuses on how you can look for and define the themes and issues within a horoscope, how you can assess the many shades of grey and, most importantly, how you can help a person to understand the best use of the multiple diversity contained within their chart.

Judy Hall

Author of *The Karmic Journey*, *Patterns of the Past*, *Karmic Connections*, *Hades Moon* and the *Astrology Bible* and *Crystal Bible*, Judy Hall has been a karmic counsellor and astrology tutor for thirty years, running an annual Karmic Astrology Retreat in Glastonbury. Her specialities are past life readings, soul healing and crystal lore. With wide experience of systems of divination and natural healing methods, Judy has a B.Ed in Religious Studies and an extensive knowledge of world religions and mythology. She is currently studying for an MA in Cultural Astronomy and Astrology. Her mentor was the western mystery tradition priestess Christine Hartley.

Saturn and Soul Growth: the Karmic Potential in Your Chart

Esoteric astrology looked on Saturn as the 'ring-pass-not' beyond which only the initiated could progress and the ancients looked on Saturn as the soul. This practical workshop will explore Saturn in the birthchart as an indicator of the karmic deficits and challenges and the perennial wisdom carried by your soul.

Healing Ancestral and Karmic Dis-ease with Astrology and Crystals

From the perspective of karmic astrology, your chart is a map of the karma you brought with you into incarnation and of the potential for transforming any negative dis-ease that your soul or your ancestral line carries. This hands-on workshop will explore the use of crystals to heal a chart.

Babs Kirby

Babs Kirby is an astrologer, lecturer, writer and psychotherapist, practising in South London. Babs is a Urania Trust trustee, a member of the Sophia Committee and on the Advisory Board of NCGR. She is a founder member of the IAPA and was Vice-President of the Faculty of Astrological Studies from 1989 to 1998. Her previous publications include *Experiential Astrology*, *Love and Sexuality* and *Interpreting Solar and Lunar Returns*. Her most recent book, published in 2006 by Arrow, is entitled *21st Century Star Signs*.

A Psychotherapist's Approach to Children's Charts

Babs will discuss how she works with children's charts, which is always as part of a synastry with the parents. The parents' charts show their capacity to understand their child and my aim is to help them give their child space for his or her individuality to grow and develop.

Sub-personalities in the Birthchart and How they Interact

Transpersonal psychology has developed techniques to access the multifarious parts of our character and calls them sub-personalities, which may or may not communicate with each other. Developing dialogue can bring about deep inner changes. Plus, we can give our sub-personalities astrological significators and gain profound insights into how we function.

Rick Levine

Astrologer for Tarot.com and co-founder of StarIQ.com, Rick Levine combines his visionary understanding of astrology's role in society with his ability to communicate astrological terms in unique ways. Rick, a Founding Trustee of Kepler College, co-author of Barnes and Noble's *Your Astrology Guide* annuals, and the subject of a DVD entitled *Quantum Astrology: Science, Spirit, and Our Place in the Cycles of History*. His daily horoscope column is read by millions on Tarot.com, MySpace.com, AOL, Google, and Beliefnet.

Plenary:

The Magic of Astrology: Art, Craft, and Science

When art and science push the limits, the results are perceived as magic. Reality is interpreted differently by the left and right hemispheres of the brain, producing the gap between art and science. Einstein demonstrated the interrelatedness of time and space. The craft of astrology bridges these opposites to create magic.

Master class:

Working the Natal Chart from the Inside Out: Navigating the Future with Transits

A combination of lecture style presentation and participatory experiential techniques will help us explore strategies to work with outer planet transits. Instead of just observing charts as 'out there', you will be placed within your own chart to learn how to ameliorate the shocks delivered by the outer planetary cycles.

Melanie Reinhart

Melanie Reinhart has been a professional astrologer since 1975, and is a prize-winning Diploma-holder of the Faculty of Astrological Studies; she also received the Charles Harvey award in 2004. Melanie has taught for leading astrology schools in the UK and abroad, and currently runs her own programme of tutorials and workshops, as well as a thriving practice offering individual readings to an international clientele. Her books include *Chiron and the Healing Journey*, *Chiron, Saturn and the Centaurs*, *Incarnation* and a contribution to the anthology *The Mars Quartet*. Melanie is also an accomplished musician. Visit her website at www.melaniereinhart.com

MELANIE REINHART PRESENTS THE CARTER MEMORIAL LECTURE

Pluto ca Change

We look at the changing definitions of the Solar System, the multitude of new inhabitants thereof, and the current shift of Pluto into Capricorn. How do we astrologers relate to this? Melanie will also review her work with Chiron and the Centaurs, the core discoveries potentially useful for our work.

Jane Ridder Patrick

Trained in herbal medicine and naturopathy as well as person-centred and transpersonal psychotherapy, Jane practices as a pharmacist and professional astrologer in Edinburgh. She is principal of the Scottish School of Astrology, has published 37 books on astrology and is a frequent guest on radio programmes. Jane is currently pursuing postgraduate studies in the Classics and History School of Edinburgh University, researching astrology, medicine and natural philosophy in pre-Enlightenment Scotland. Her classic, *A Handbook of Medical Astrology*, has recently been republished in a revised and enlarged edition.

Psychosomatic Medical Astrology

Astrology is a powerful tool for examining the emotional and mental patterns that correspond with the workings of the physical body. It can flag up the potential health problems and strengths shown in the birth chart. Using case histories, Jane will look at a range of psychosomatic connections and possible routes to healing.

Me and My Shadow: Experiential Astrology

It can be therapeutic – and fun – to discover hidden parts of ourselves in a safe space. Techniques that enable us to experience the archetypal symbols directly open the way to a greater understanding of astrology, which comes from the heart as well as the intellect.

Christeen Skinner

Christeen Skinner has an astrological practice in London. She is author of the book *The Financial Universe* (2004), and now of the regular e-letters of the same name. She is also author of *Money Signs* (1998). She has lectured widely and is privileged to have taught some fine astrologers. She is committed to working with those who have interest in business, social and planetary cycles and regularly meets with technical analysts and historians to explore correlations between their working cycles and those of the planets.

Working with Long-Distance Clients

During this session we will look at three case histories. One client communicates via email, another prefers telephone. These two clients make irregular contact. The third client visits London regularly, making meetings possible. In this session, Christeen will look at the different astrological approaches used.

Practical Working with Business Clients

Business people expect results. After the initial engagement, few are prepared to wait for a lengthy written report to be delivered and instead require an ongoing, fast and cost-effective service. This session will look at some of the techniques I employ and the tools I find essential.

Graeme Tobyn

Graeme Tobyn is a senior lecturer in herbal medicine at the University of Central Lancashire, and a member of the Company of Astrologers, London. He has worked in the NHS as a herbalist and is an international lecturer in both herbal medicine and astrology. He recently appeared in BBC4's 'Rebel Physician' about the life and works of Nicholas Culpeper. He is the author of *Culpeper's Medicine* (Element 1997) and is currently preparing a new herbal, which draws on works from Dioscorides to the present day.

Culpeper, herbal medicines and astrology

Nicholas Culpeper is increasingly being recognized as an important figure in the history of medicine. Graeme Tobyn will show how linked patients and plants with the planets.

Decumbitures and Medical Horaries: What are They and How do You Read Them?

Using examples of Culpeper's charts and his own horoscopes drawn from herbal practice, Graeme Tobyn will demonstrate how astrology can be used to diagnose and prescribe.

Alexander von Schlieffen

Alexander studied at the art academy in Düsseldorf and has had exhibitions in Europe. He started studying astrology in 1991 and has been working as a practising astrologer and teacher since 1996. He is a regular tutor at the Astrologie-Zentrum-Berlin, the CPA in London, and the SFER in Salzburg, Austria. He is lecturing at conferences worldwide. His first book is called *When Chimpanzees Dream Astrology*. He lives as a portrait painter and astrologer in Berlin.

The Definition of Space in Painting

Each astrological sign has a different concept of space. The manifestation of each sign's individual take on space can be beautifully studied in painting all through history. Space is basically the

physically felt relationship to the environment. This relation has an impact on the inner space, on the emotional as well as on the mental one. We will look at paintings from various epochs to study the twelve archetypical concepts of space.

POP: Power of Projection

Projections are often based on experiences that memory transforms into powerful images.

Sometimes projections represent something we are longing for in the future.

Following their seductive power can help us to find our own way but it can also guide us straight into nowhere land. How do we find out? How can astrology help?

Sue Ward

Sue Ward is a professional astrologer and has been studying the art for about twenty-five years. She is the Principal of the Traditional Horary Course. Having written many articles for numerous astrological publications, she has so far successfully resisted the urge to write a book, much preferring the research of technical matters when lecturing, teaching and clients permit.

Masterclass:

Chart Judgement: the Ritual

After the theory, the judgement of the chart is the next challenge for any astrologer and the key to accuracy is knowing which technique to apply and at which point. Using example charts, Sue will demonstrate how to approach chart judgement in an orderly and ritualistic fashion for the best results. These explanations, whilst specifically for the judging of horary questions, have a wider application to nativities and mundane work.

Plenary:

God, the Universe and Everything

Founded upon many years of hard study and thought, Sue will explain the part they play in practical astrological work, and how an appreciation of them affects the astrologer.

Advisory Panel on Astrological Education (APAE) Schools and Organisations

Association of Professional Astrologers International (APAI)

Chris Ogilvie

Chris is an astrologer based in the Lake District. She is a council member of the APAI, a contributor of articles to *Transit* and a regular broadcaster for Radio Cumbria as their resident astrologer. She attracts many clients who are having Pluto transits and has had plenty of her own. In her spare time she is a keen hill walker and part-time university teacher

Interpreting Pluto Transits

Pluto spring cleans our lives through a process which is often dark and profound. This workshop will use a series of real-life case studies to illustrate how Pluto transits regenerate us ruthlessly, relentlessly yet ultimately miraculously. Participants may wish to bring their own experience to share.

Astrological Lodge of London (ALL)

Andrew Morton

Andrew Morton is a Committee Member and Programme Co-ordinator for the ALL. He organised the series of seminars held in London to celebrate the Lodge's 90th Birthday in 2005, culminating in the innovative 'Astrology and Healing' conference which has recently completed its third successful year. Andrew writes the 'Heavens Above' columns for *Astrologos* and *Astrology Quarterly* and has a special interest in observational astronomy and how it can be used to enhance our astrology.

Harmonics: 'Nice 'n easy does it...'

Harmonics is one of those techniques that we've pretty much all heard of but few of us routinely use, perhaps because it can sometimes appear far too complicated and confusing. However, it can be reasonably straightforward, fun and highly informative. An essential tool for today's astrologer.

British Association for Vedic Astrology (BAVA)

Gordon Brennan

Gordon is the Education Secretary of BAVA and has been on the BAVA Committee since its first AGM nearly ten years ago. He has been the BAVA representative on the APAE committee for several years. He ran a travel business for twenty-five years before becoming a full-time astrologer and bookseller. Early contacts with India and Indian philosophy led him to study Sanskrit, then to importing Indian books and fourteen years ago to Vedic Astrology. He can be contacted at gwbrennan@aol.com

Vedic Astrology Techniques

Vedic Astrology is often seen as a mystery or at least a separate study. This talk will show which matters can be treated the same in Western or Vedic and how you can use simple maths or quick computer methods to access some of the techniques used in Vedic Astrology.

The Mayo School of Astrology

Caroline Moroz

Caroline left a career in sales and marketing and took up astrology during a major Neptune transit, subsequently gaining the AGE International Diploma with distinction. She is a council member of the APAI and is committed to using astrology to provide practical advice which empowers individuals in their lives. Caroline is also a tutor and representative for the Mayo School of Astrology.

Grand Aspect Patterns: tantrums or talents?

One challenging aspect in the birth chart can be bad enough, but what happens when several of them conspire to complicate your life? This talk will break down Grand Aspect Patterns into their component parts, help you to find practical ways of dealing with the potential difficulties they present and turn them into positive talents.

London School of Astrology (LSA)

Frank Clifford

Frank works as an astrologer and palmist, and has written books on both subjects, including *British Entertainers: the Astrological Profiles* and *Palmistry 4 Today*, which has become the modern textbook on the subject and has been published in five languages. New titles, including *The Midheaven: Spotlight on Success*, are due in 2007, published by his company Flare. Frank compiled the *Clifford Data Compendium* for Solar Fire and writes astrology columns in UK and US magazines. He became head of the London School of Astrology in 2004, lectures around the UK and is a guest lecturer at a university in London.

Getting to the Heart of the Chart

No chart is difficult to interpret if we develop a method of breaking it down into manageable pieces, spotting overtones and conflicting dynamics, then working to synthesize these factors. In this talk, Frank will introduce a way to highlight the major themes, traits and planetary types in any horoscope.

Faculty of Astrological Studies (FAS)

Sue Farebrother

Sue was until recently a member of the council of the Faculty of Astrological Studies, serving the full term of six years, and was Editor of their in-house newsletter *Stellium*. Sue continues to be a Faculty tutor and has been practising astrology for twenty-five years, both as a private consultant and lecturer for local groups and the Astrological Lodge. Her background includes a professional Psychosynthesis training and more than twenty years' experience with tarot, both as a teacher and consultant reader. She is near completion of a Masters degree in Cultural Astronomy and Astrology at Bath Spa University.

The Moon's Nodes

Known to the ancients as the Dragon's Head and Tail, the Nodes of the Moon add valuable information to chart interpretation. We will consider the underlying astronomy and explore the

meanings of the Nodal axis through the houses, signs and planetary aspects. Some say there is a karmic connection...

Company of Astrologers (COA)

Pat Blackett

Pat is a tutor with the COA and editor of the *Star Temple* newsletter. Until recently she was secretary of the Sophia Project. Pat has a special interest in psychoanalysis and the tarot and is a co-author of the children's book, *Your Starsign and You*.

Locating Significance Chart Interpretation Method

The Locating Significance method of chart interpretation is unique to the Company of Astrologers and has been developed over many years. It is based on significance, rather than synthesis, making use of traditional theory and the best of modern practice. In this talk we will look at the symbolic attitude which allows the chart to speak and reveal its key signatures.

Qualifying Horary Practitioner (QHP)

Barbara Dunn

A full-time astrologer and writer of many columns, Barbara is Principal of the Qualifying Horary Practitioner course, teaching students worldwide. After graduating from the London School of Economics, Barbara enrolled with the Faculty of Astrological Studies, receiving their Diploma in 1988. She subsequently studied horary astrology with Olivia Barclay, completing the QHP in 1990. Barbara was Head Tutor and subsequently Principal, inheriting the QHP from Olivia Barclay in 2001. She has had three astrology books published and is currently writing a further two on horary astrology.

The Qualifying Horary Practitioner (QHP)

Mastery of horary judgement is the path that leads to true judgement of electional, natal and mundane charts. Barbara outlines the symbolism, showing either affirmation or denial, in a horary question. Details of the QHP (Certificate and Diploma) are presented, plus the chance to enrol at special AA Conference discounted rates.

British Astrological and Psychics Society (BAPS)

Christine Chalklin

Christine grew up with astrology, as both her mother and grandmother were enthusiastic students. She now includes holistic healing, nutrition, self-development and life coaching within her work. Her main interest has always been inspiring people to connect with their talents and potential by overcoming their blockages and weaknesses. Christine teaches astrology, Bach Flower Remedies and the tarot, both privately and at local adult education colleges. She also lectures and often combines astrology with her passion for history. She has been head of the astrology school for the British Astrological and Psychic Society since 2002. See her website www.christineuk.usana.com

Bach Flowers and Astrology: discover your type remedy

The Bach flower essences have been in use for nearly eighty years. They were developed by Dr Edward Bach, who also studied astrology and correlated each Moon sign with a particular essence. In this talk we will examine various combinations and also which remedies to use during challenging transits.

White Eagle School of Astrology (WESA)

Margaret Studden

Margaret is a practising astrologer with 20 years' experience of giving personal readings and talks. She has been the tutor of the beginner's correspondence course for WESA since 1991. Her background includes teaching yoga and meditation and facilitating groups and workshops in astrology, personal growth and storytelling. Her special interest is in teaching astrology through creativity, so that students can directly experience for themselves the energies of the planets.

Creative Astrology

Creative Astrology offers an opportunity for each individual to understand and experience planetary energies. Through guided visualisation we will give the planets form and life, and through simple

movements we will discover how to sense basic planetary principles. Drama and storytelling will be included to enhance the creative process.

Charles Harvey Award

The London School of Astrology (LSA) and The Association of Professional Astrologers International (APAI) nominate Dennis Elwell.

Dennis Elwell has been delighting astrological audiences for decades with his witty, thought-provoking, stimulating and meticulously crafted lectures. Fuelled by a desire to rehabilitate astrology as a serious subject, and to understand how it and the Universe might operate, his studies have embraced the ideas of Gurdjieff, Steiner and other metaphysicians, occultists and scientists. Always down-to-earth and accessible in both his writings and lectures, Elwell illustrates astrology's philosophical and psychological richness as well as its many practical uses in a way that can only be described as breathtaking. His remarkably bold and successful 'predictions' have also garnered him much notice over the years, too. Nowhere are Dennis Elwell's skills more apparent than in *Cosmic Loom*, which is not only a hugely enjoyable and exciting read, but is surely one of the most important astrology books ever written.

The Faculty of Astrological Studies (FAS) and The Astrological Association of Great Britain (AA) nominate Robert Hand.

Robert Hand's pioneering contributions to both the development of modern astrology and the recovery of our understanding of its ancient traditions are immense. He is the author of numerous seminal works in astrology, including the best-selling *Planets in Transit*, *Planets in Youth*, *Planets in Composite*, and *Horoscope Symbols*. As a philosopher and humanist, he has argued with deep insight for the re-establishment of astrology in academia. He is also an expert computer programmer, who played a major pioneering role in establishing fundamental algorithms that underpin astrological programming to this day. His *Nova* had an elegance and an incredibly wide range of astrological features. His *AstroAnalyst* for financial traders remains uniquely useful after sixteen years.

Rob is also renowned for his pioneering work into new astrological techniques including the Composite chart and astrological research. More recently this has focused on recovering the roots of the western astrological tradition and applying them in today's world. He is founder of the Archive for the Retrieval of Historical Astrological Texts (ARHAT), and has been involved in the research and translation of ancient astrological writings. Rob has been a leading lecturer at Astrology Conferences all over the world and is at present preparing a PhD at the Catholic University in Washington DC

CONFERENCE TIMETABLE

FRIDAY 7 SEPTEMBER

09:30-14:00	CAMBRIDGE TOUR with Nick Campion & Prudence Jones The Glittering Spires (Separate booking required) - includes lunch and return transport to Conference venue 14:00
14:30-17:45	MASTERCLASSES (Separate booking required) Darrelyn Gunzburg Written by the Chart: a Different Look at Your Chart through your Handwriting Sue Ward Chart Judgement: the Ritual
15:15-16:15	FRINGE TRACK All delegates are invited to attend parallel fringe tracks, take part in debate, and perhaps offer a fringe track of their own – contact the AA Chair for further details.

<u>16:15-16:45</u>	<u>Tea</u>
<u>16:45-17:45</u>	FRINGE TRACK All delegates are invited to attend parallel fringe tracks, take part in debate, and perhaps offer a fringe track of their own – contact the AA Chair for further details.
<u>17:45-18:00</u>	<u>Assemble for Conference Opening</u>
<u>18:00-18:15</u>	<u>Conference opening</u>
<u>18:15-18:45</u>	PLENARY <u>Rick Levine</u> The Magic of Astrology: Art, Craft, and Science
<u>18:45-20:15</u>	<u>Dinner</u>
<u>20:15-21:15</u>	CARTER MEMORIAL LECTURE Melanie Reinhart Pluto ca Change
SATURDAY 8 SEPTEMBER	
07:15-08:15	Yoga
<u>07:30-09:00</u>	<u>Breakfast</u>
09:00-10:00	<u>Judy Hall</u> Saturn and Soul Growth: the Karmic Potential in Your Chart <u>Claire Chandler</u> Unlocking the Secrets of Eclipses STUDENT TRACK: <u>Sue Farebrother</u> The Moon's Nodes
10.15.11.15	<u>Jane Ridder-Patrick</u> Me and My Shadow: Experiential Astrology <u>Christeen Skinner</u> Working with Long-Distance Clients STUDENT TRACK: <u>Frank Clifford</u> Getting to the Heart of the Chart
<u>11.15-11.45</u>	<u>Tea break</u>
<u>11.45-12.45</u>	PLENARY <u>Sue Ward</u> God, the Universe and Everything
<u>12:45-14:15</u>	<u>Lunch</u>
<u>13.30 - 14:15</u>	<u>AGM</u>
<u>14:15-15:15</u>	<u>Rick Levine Masterclass</u> Part 1

Working the Natal Chart from the Inside Out: Navigating the Future with Transits

[Christeen Skinner](#)

Practical Working with Business Clients

STUDENT TRACK: [Caroline Moroz](#)

Grand aspect patterns: tantrums or talents?

[15:30-16:30](#)

[Rick Levine](#) **Masterclass** Part 2

Working the Natal Chart from the Inside Out: Navigating the Future with Transits

-

[Alexander von Schlieffen](#)

POP: Power of Projection

STUDENT TRACK: [Pat Blackett](#)

Locating Significance Chart Interpretation Method

[16:30-17:00](#)

Tea break

[17:00-18:00](#)

[Graeme Toby](#)

Culpeper, Herbal Medicines and Astrology

[Babs Kirby](#)

A Psychotherapist's Approach to Children's Charts

STUDENT TRACK: [Andrew Morton](#)

Harmonics: 'Nice 'n easy does it...'

[18:15-19:15](#)

STUDENT TRACK: [Margaret Studden](#)

Creative Astrology

[APAE and Local Groups meetings](#)

[20:00-22:00](#)

Dinner - With an after-dinner talk by [Bernard Eccles](#) on 'Fortune-telling: the Profession we Hate to Admit to' at [21:00](#)

SUNDAY 9 SEPTEMBER

[07:15-08:15](#)

Yoga

[07:30-09:00](#)

Breakfast

[09:00-10:00](#)

[Graeme Toby](#)

Decumbitures and Medical Horaries: What are They and How do you Read Them?

[Bernard Eccles](#)

No Birthtime? No Problem!

STUDENT TRACK: [Chris Ogilvie](#)

Interpreting Pluto Transits

[10.15.11.15](#)

[Claire Chandler](#)

Forecasting the Year: Judging the Climate of the Year Ahead

[Jane Ridder Patrick](#)

Psychosomatic Medical Astrology

STUDENT TRACK: [Barbara Dunn](#)
The Qualifying Horary Practitioner (QHP)

[11.15-11.45](#) [Tea break](#)

[11.45-12.45](#) [Bernard Eccles](#)
Re-examining Primary Progressions

[Darrelyn Gunzburg](#)
Unfolding Stories: a way of approaching the themes and issues of the natal chart

STUDENT TRACK: [Gordon Brennan](#)
Vedic Astrology Techniques

[12:45-14:15](#) [Lunch](#)

[14:15-15:15](#) [Babs Kirby](#)
Sub-personalities in the Birthchart and How they Interact

[Judy Hall](#)
Healing Ancestral and Karmic Dis-ease with Astrology and Crystals

STUDENT TRACK: [Christine Chalklin](#)
Bach Flowers and Astrology: Discover your Type Remedy

[15:30-16:30](#) PLENARY
[Alexander von Schlieffen](#)
The Definition of Space in Painting

[16:30-17:00](#) [Conference close](#)

